

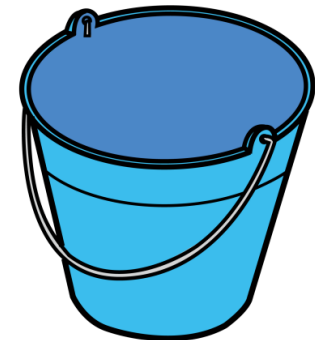
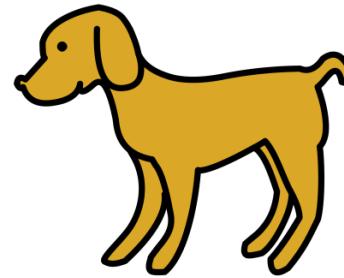
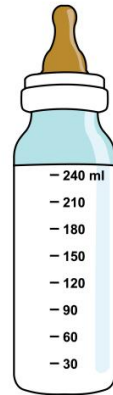
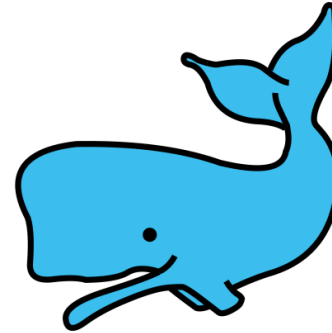
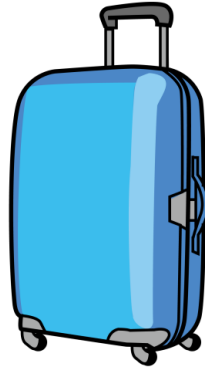
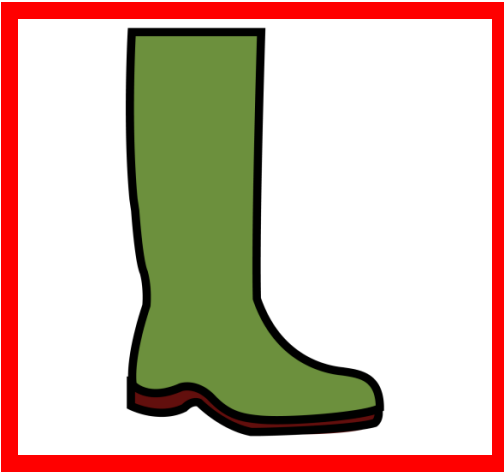
FICHAS DE DISCRIMINACIÓN AUDITIVA

Las siguientes fichas van destinadas al trabajo de la discriminación auditiva.

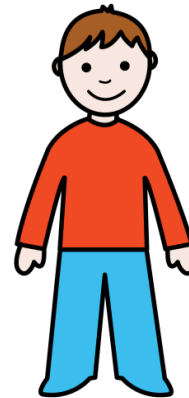
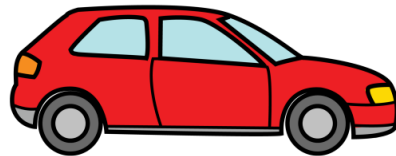
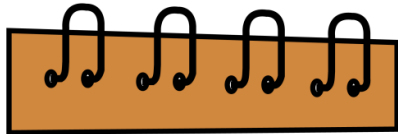
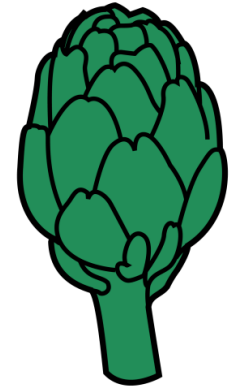
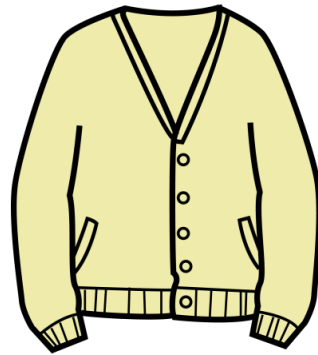
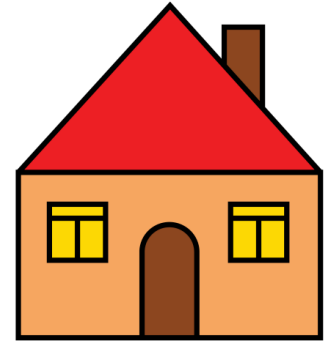
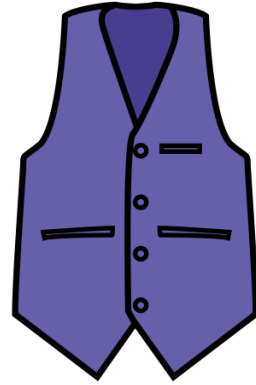
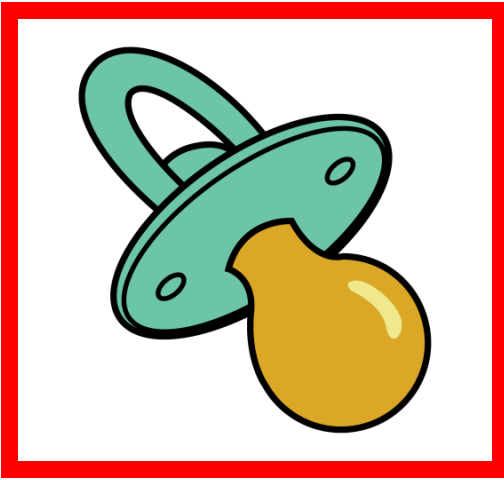
La actividad consiste en rodear todos los dibujos que contengan el fonema indicado en la parte superior izquierda.

Se empezarán a trabajar en el nivel de infantil de 4 años tras trabajar el módulo de articulación. Habrá que buscar el momento para trabajar las fichas correspondientes de los fonemas trabajados en infantil de 3 años.

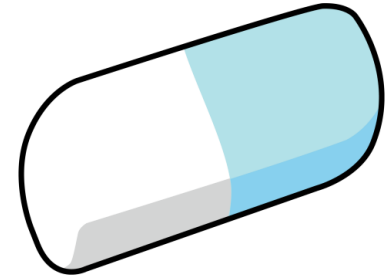
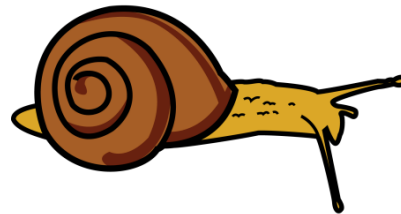
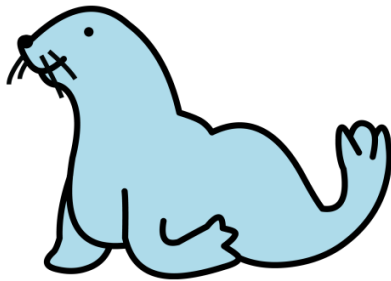
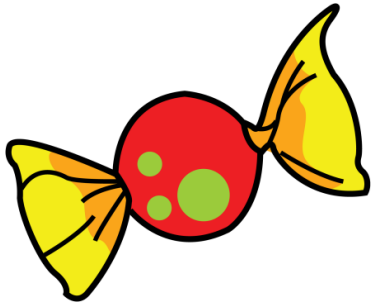
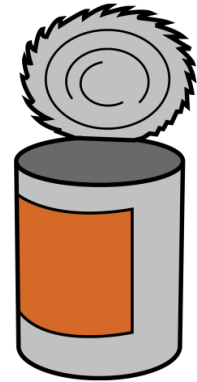
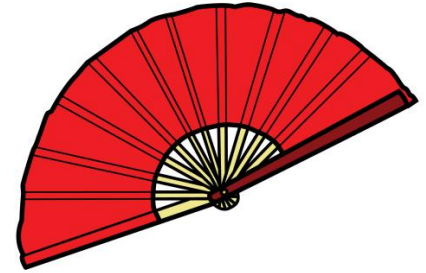
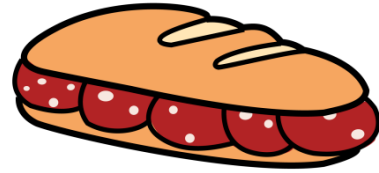
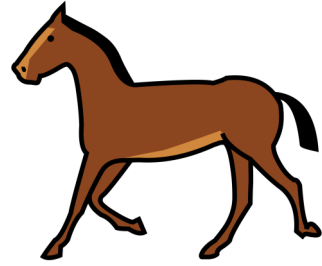
Fonema /b/



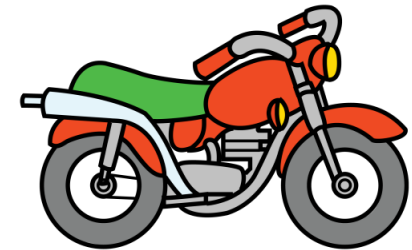
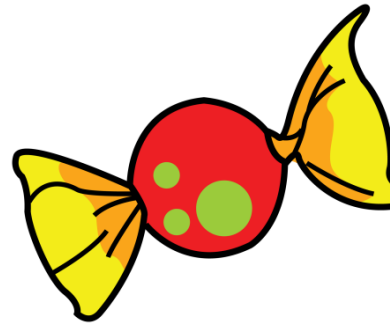
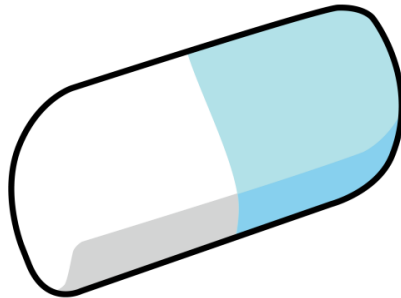
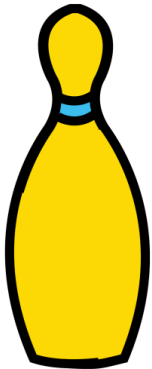
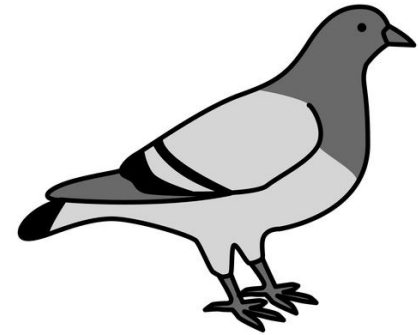
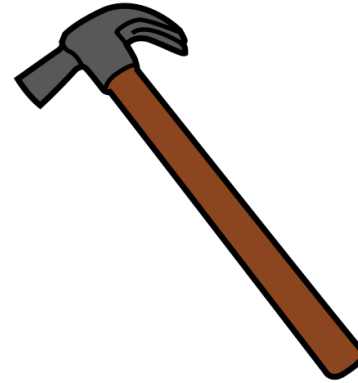
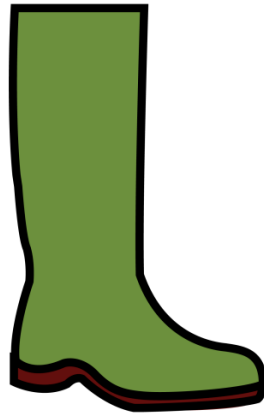
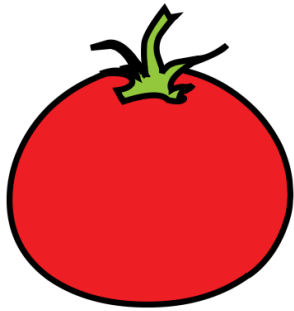
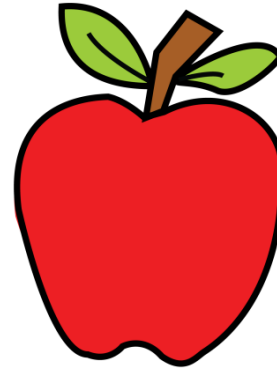
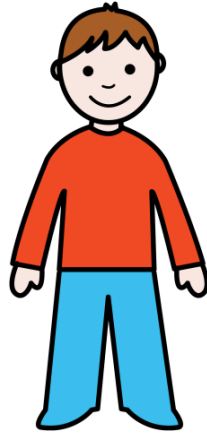
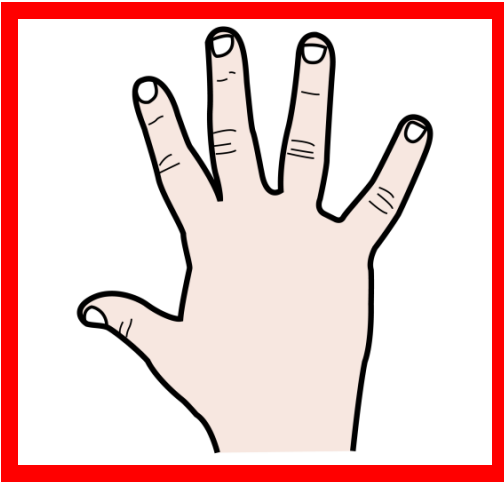
Fonema /ch/



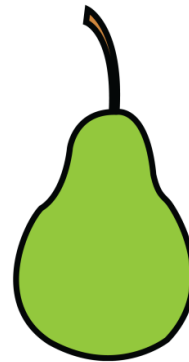
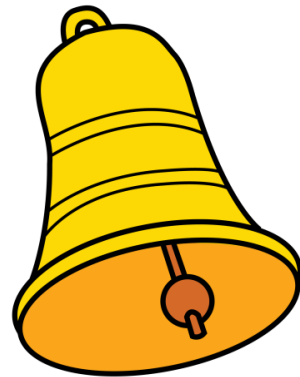
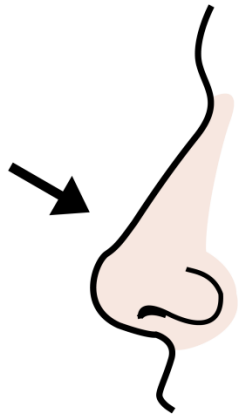
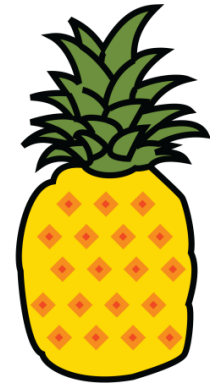
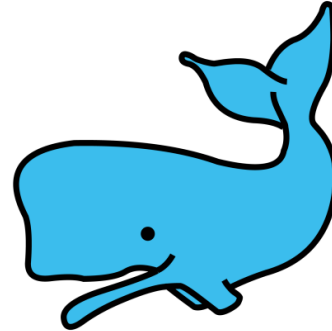
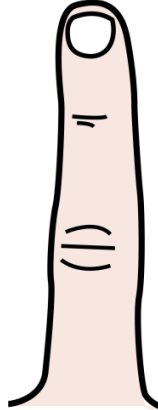
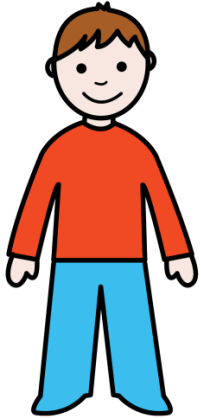
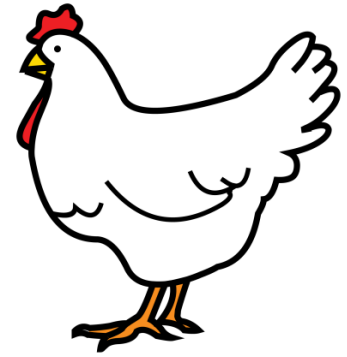
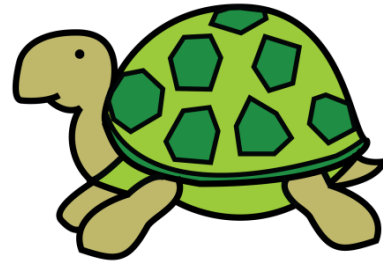
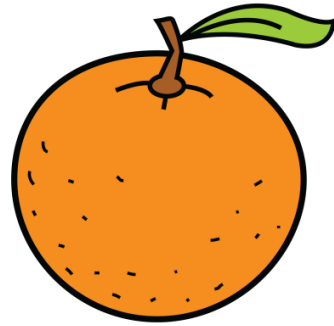
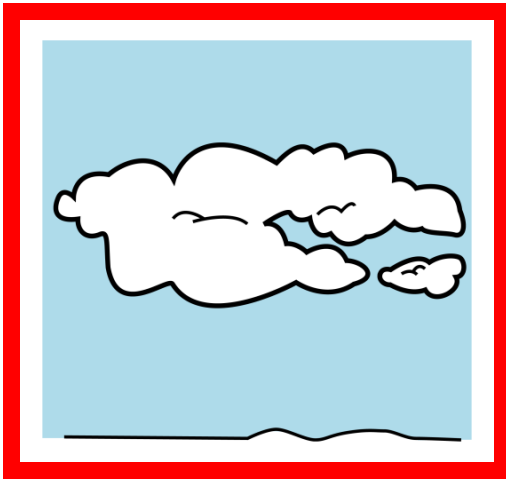
Fonema /k/



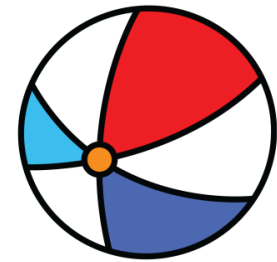
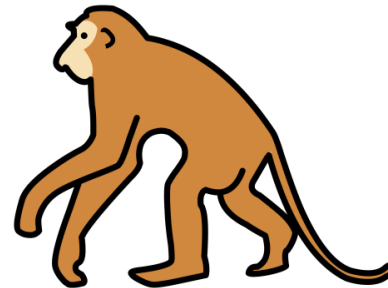
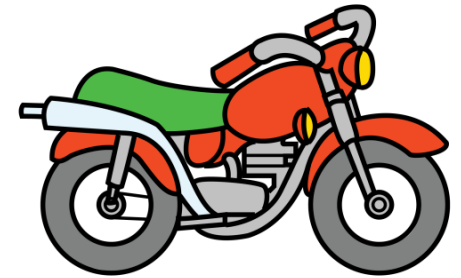
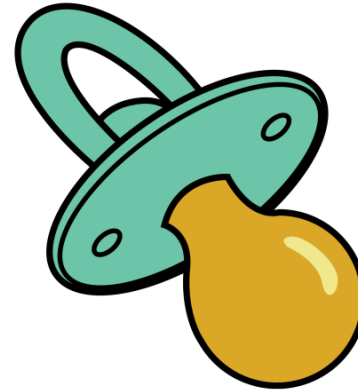
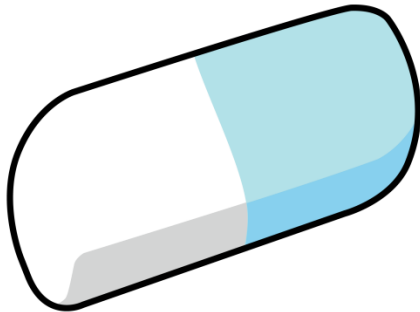
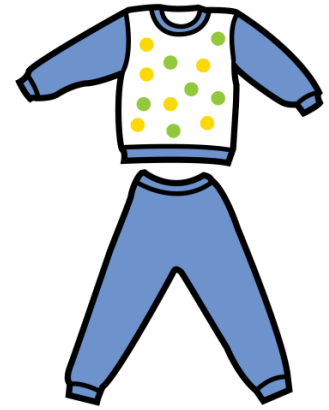
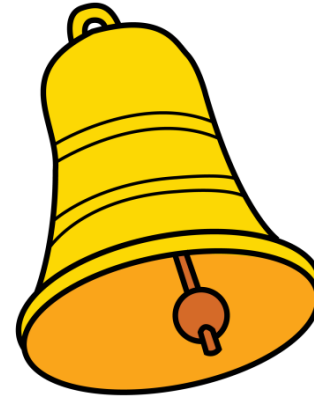
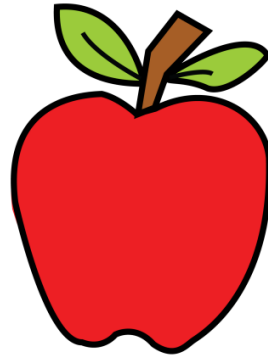
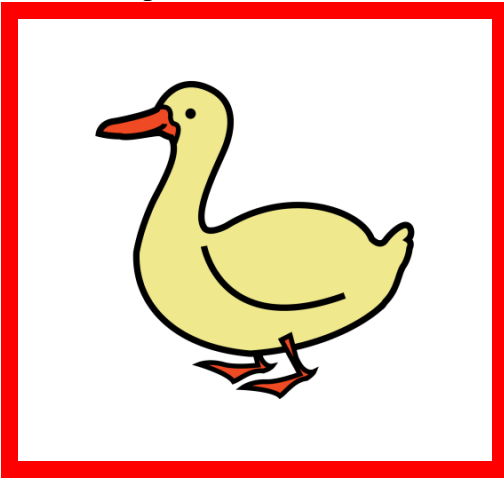
Fonema /m/



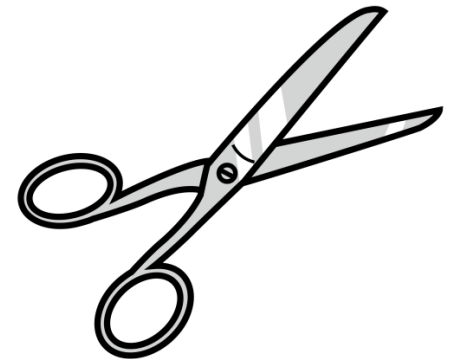
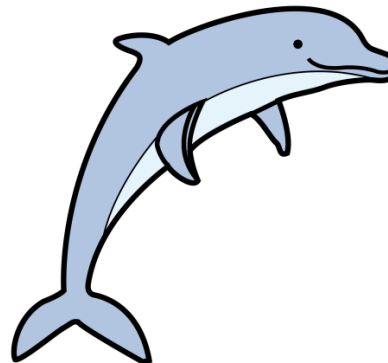
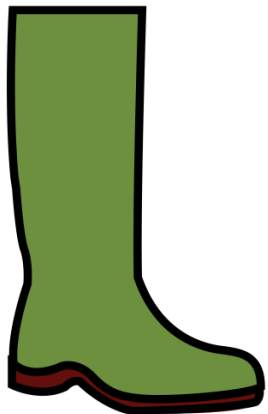
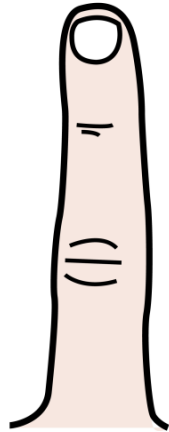
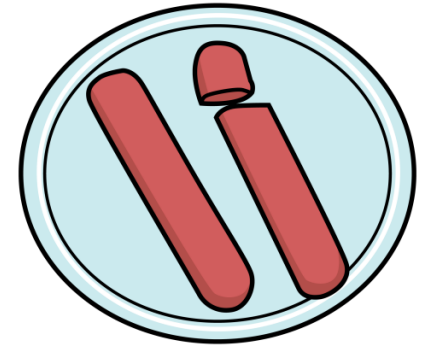
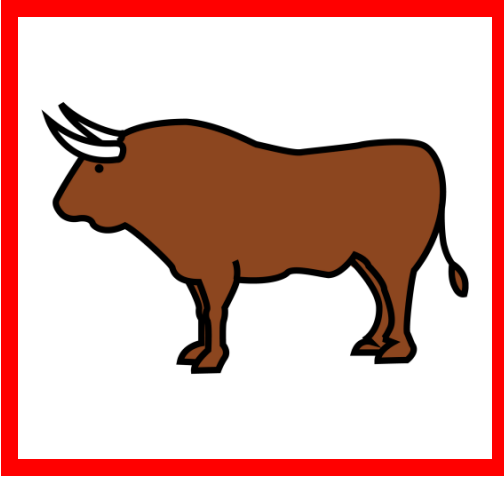
Fonema /n/



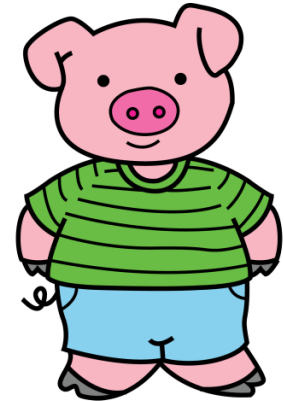
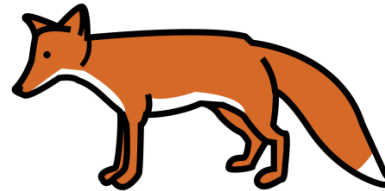
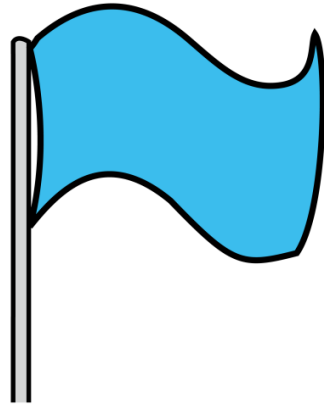
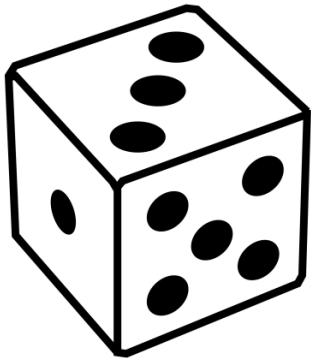
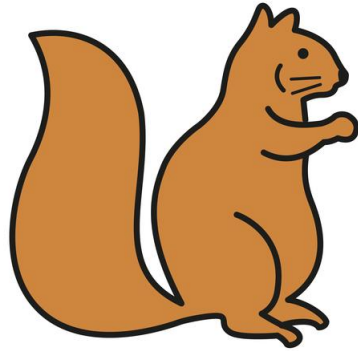
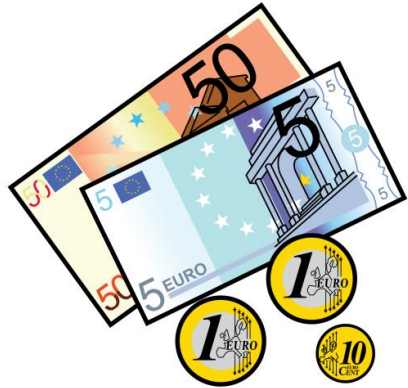
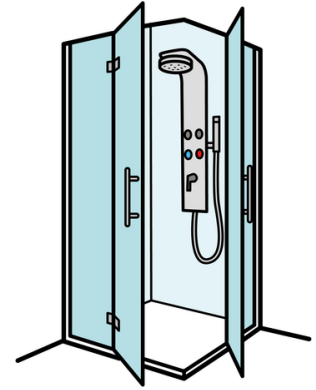
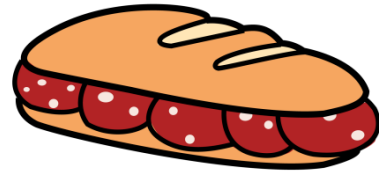
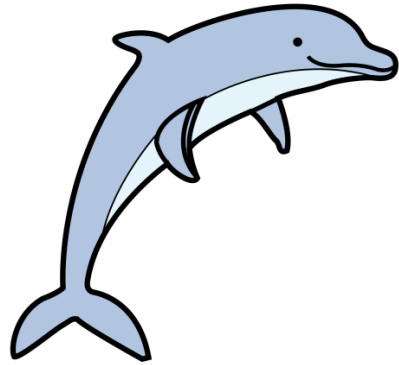
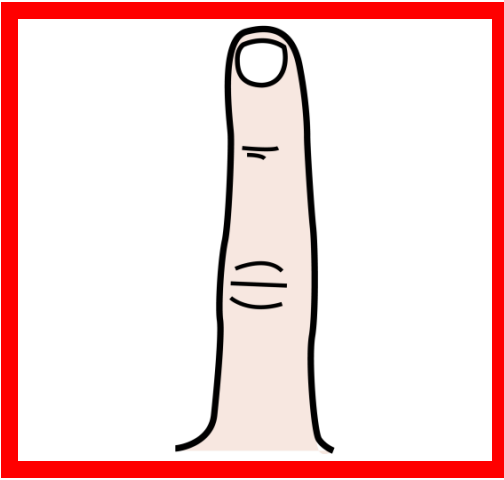
Fonema /p/



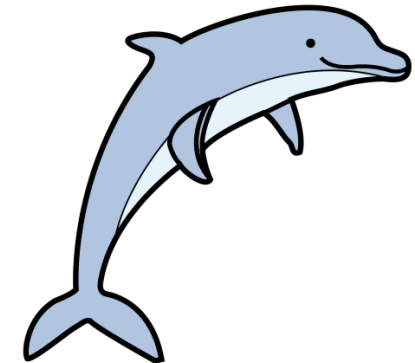
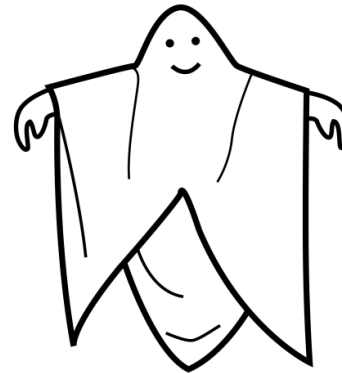
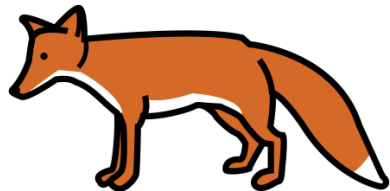
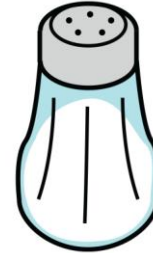
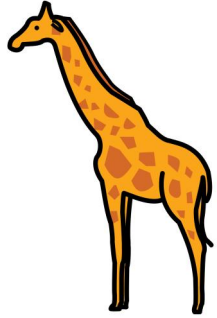
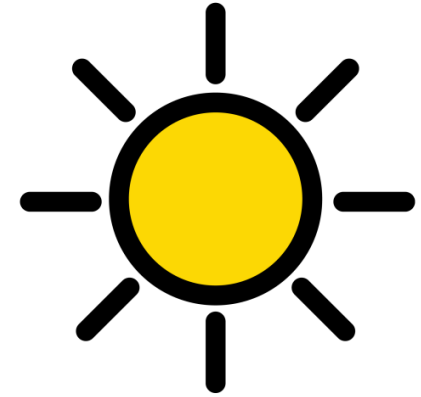
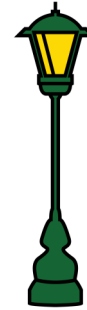
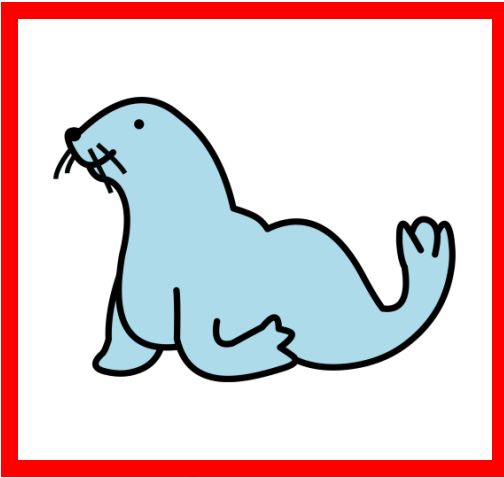
Fonema /t/



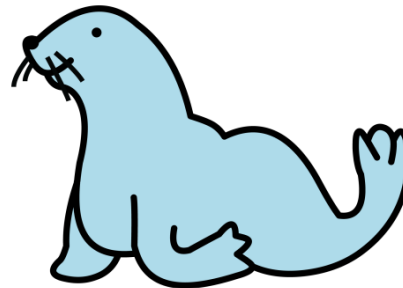
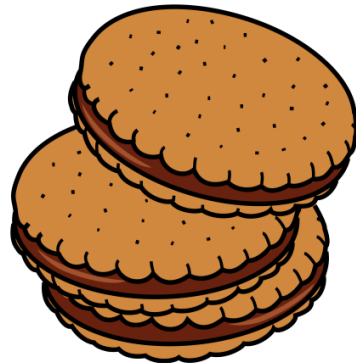
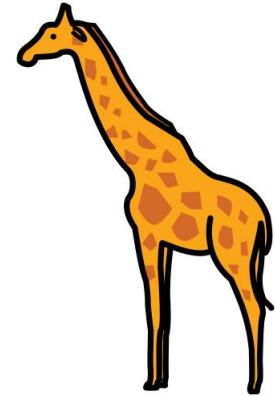
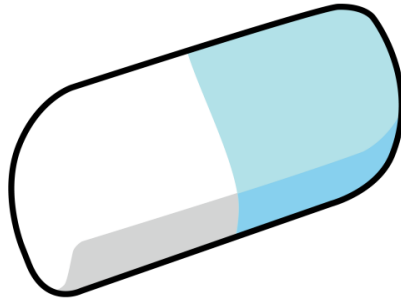
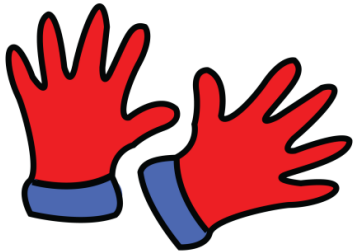
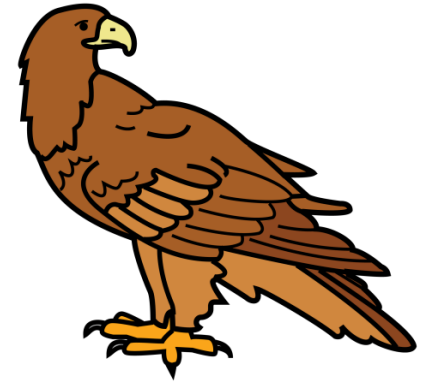
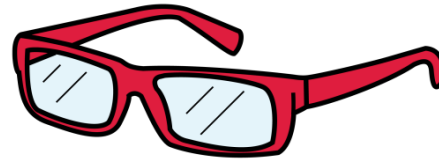
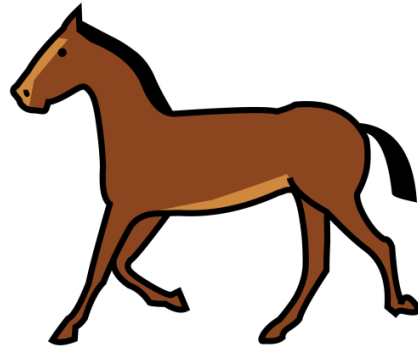
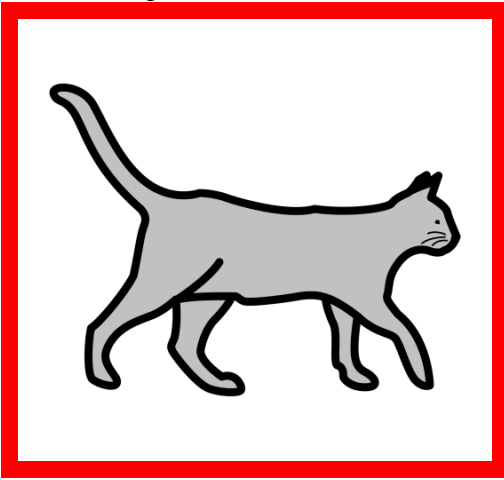
Fonema /d/



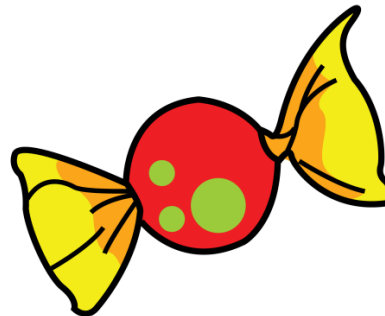
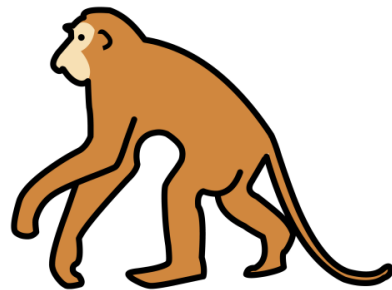
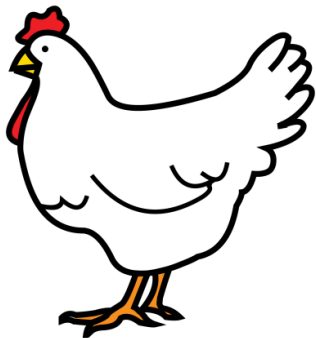
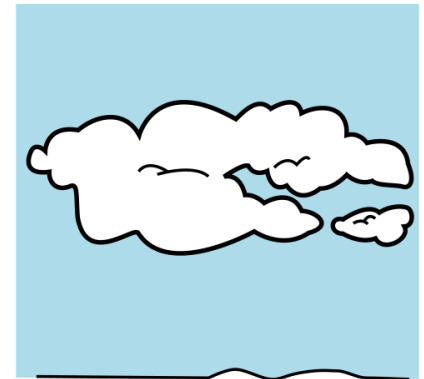
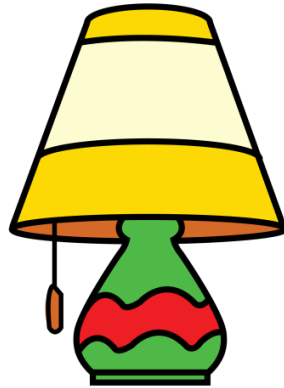
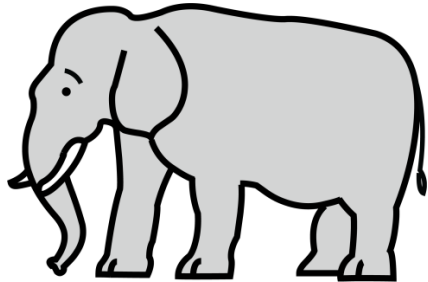
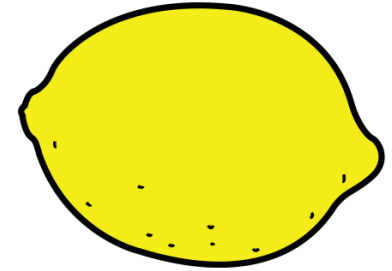
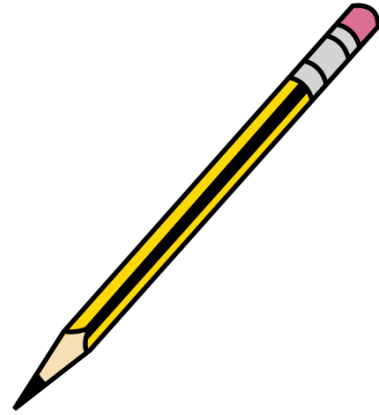
Fonema /f/



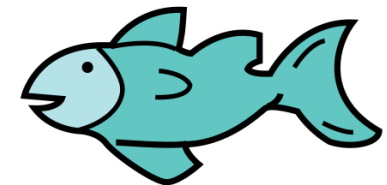
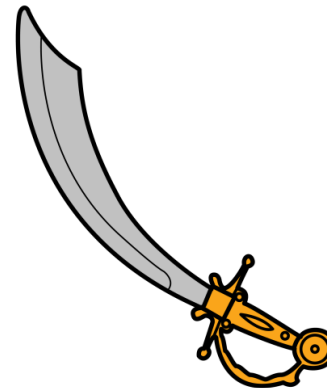
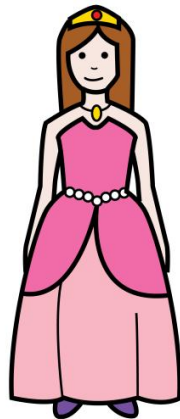
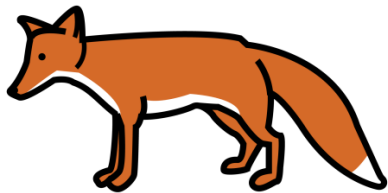
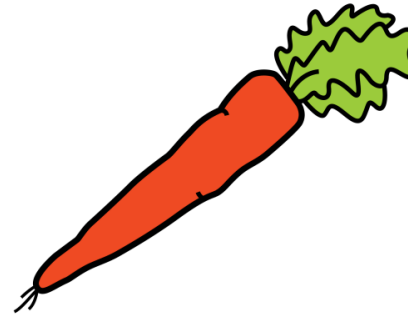
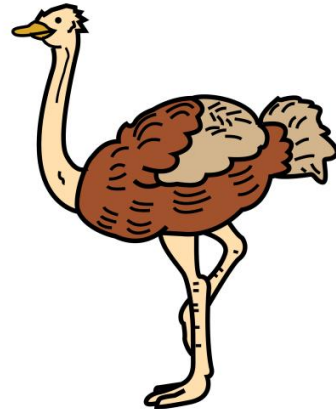
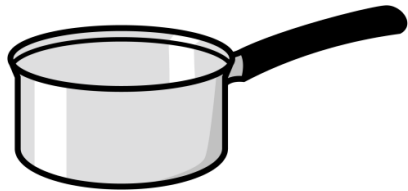
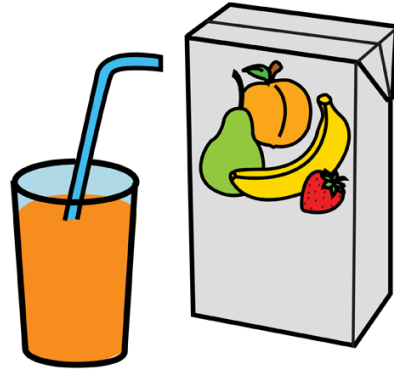
Fonema /g/



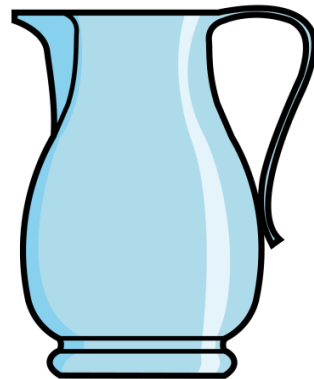
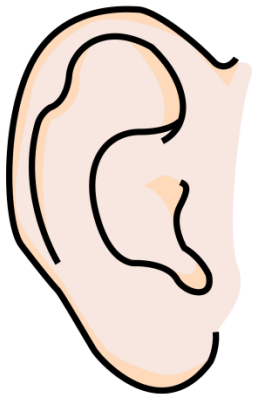
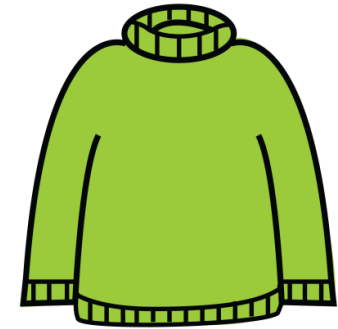
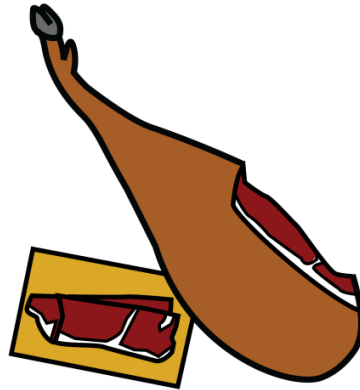
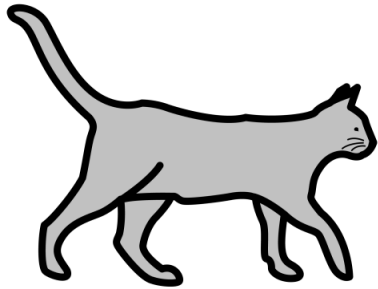
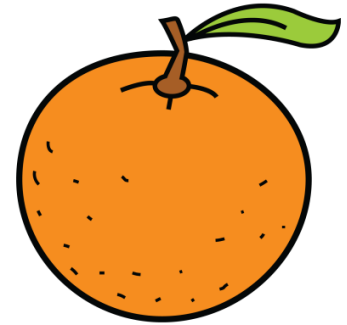
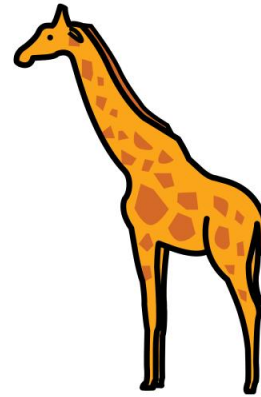
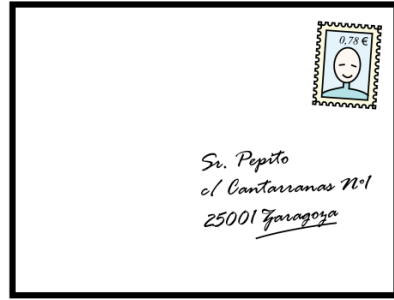
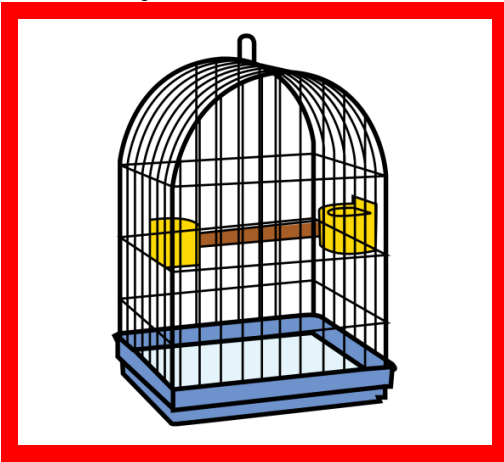
Fonema /l/



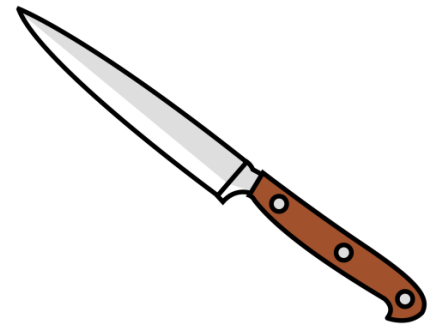
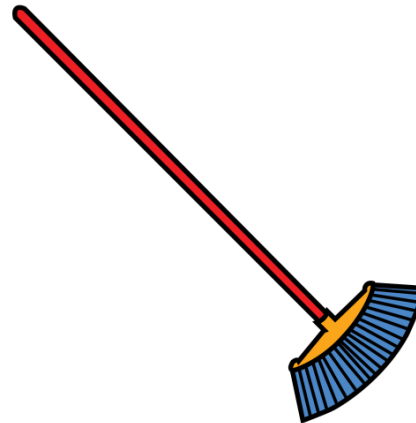
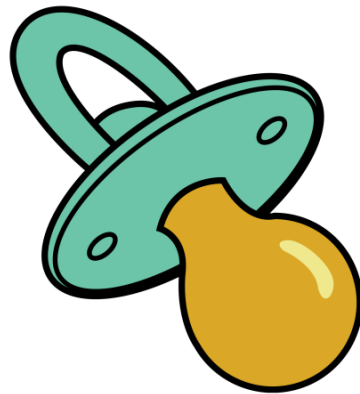
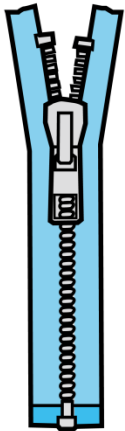
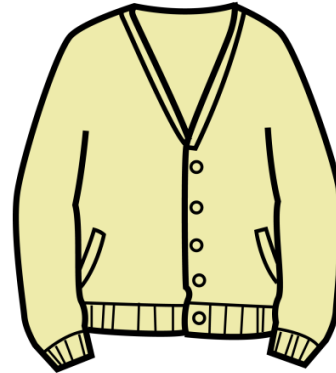
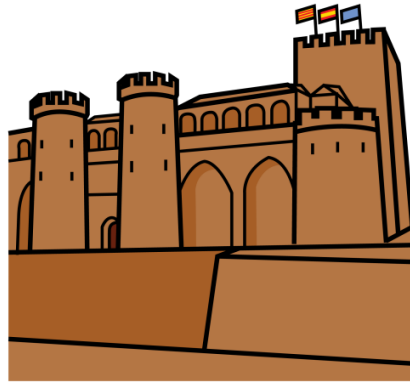
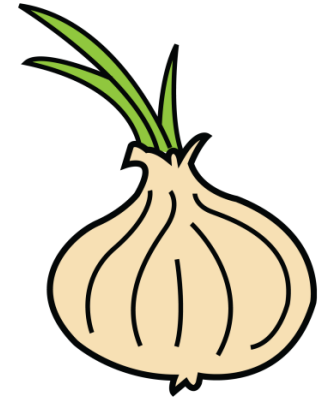
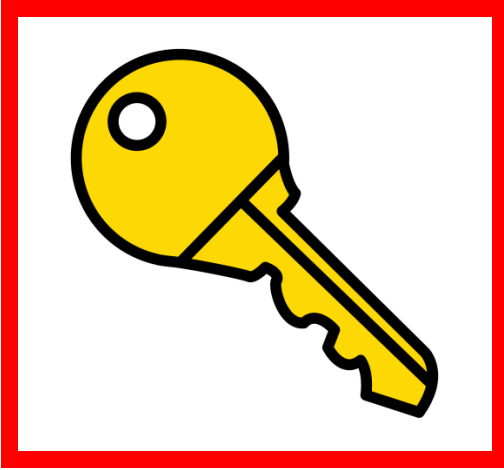
Fonema /z/



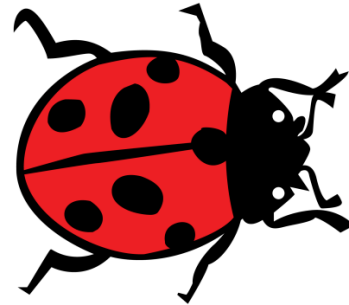
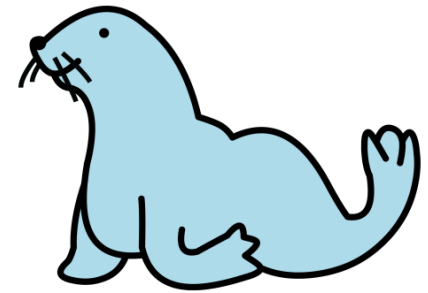
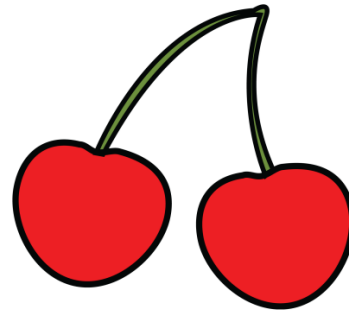
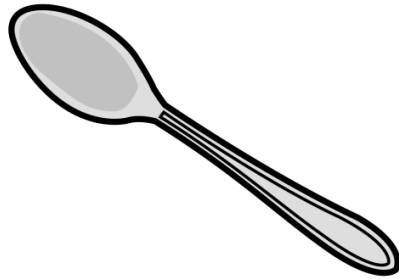
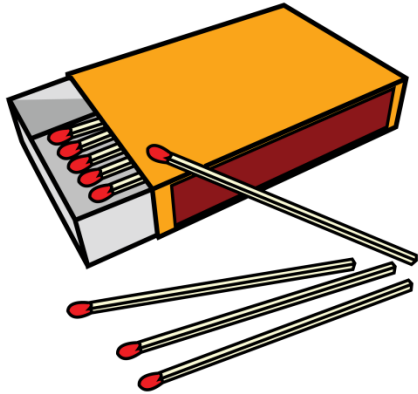
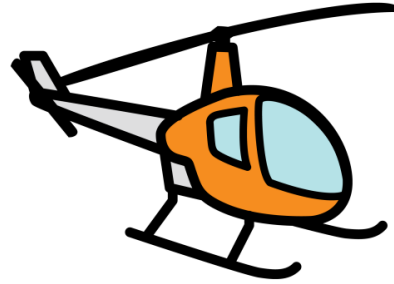
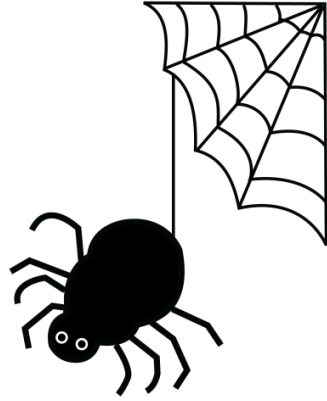
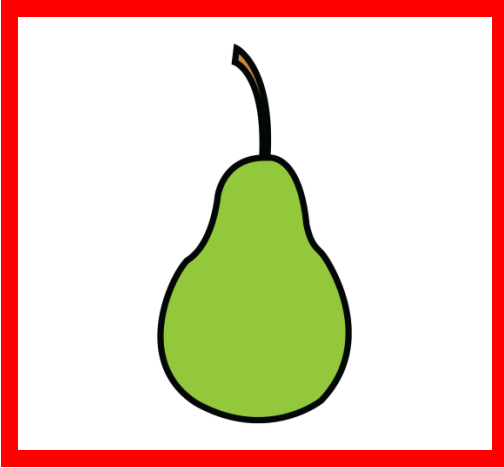
Fonema /j/



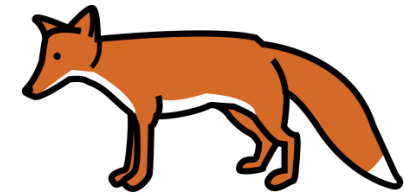
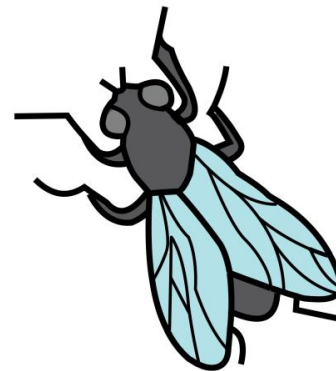
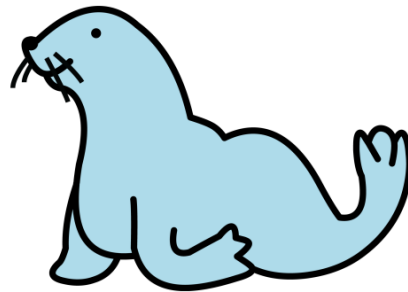
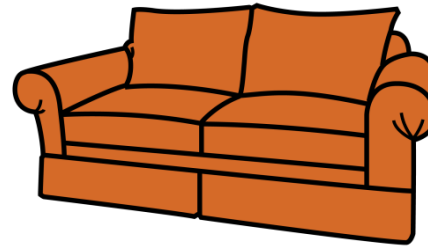
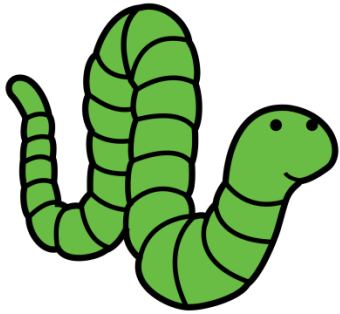
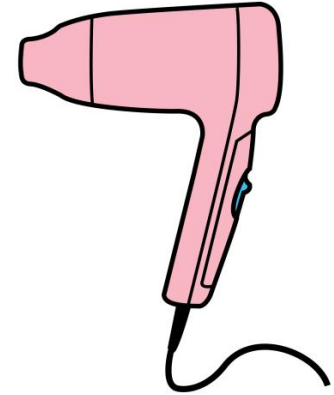
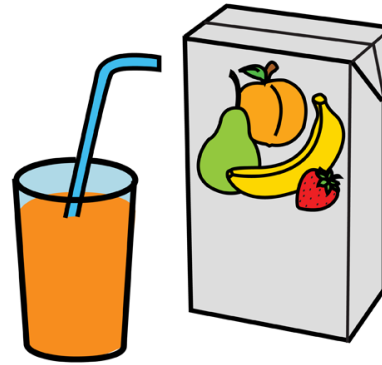
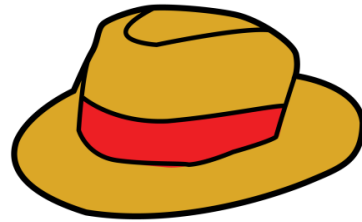
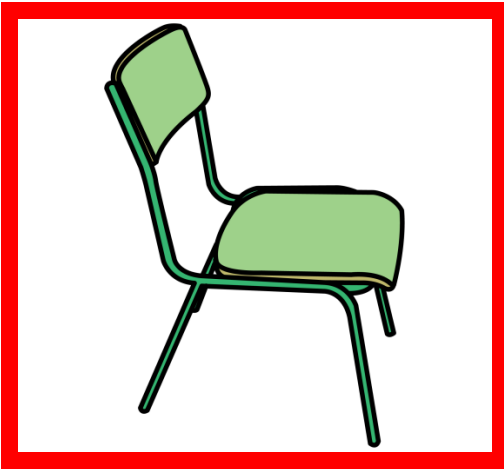
Fonema /ll/



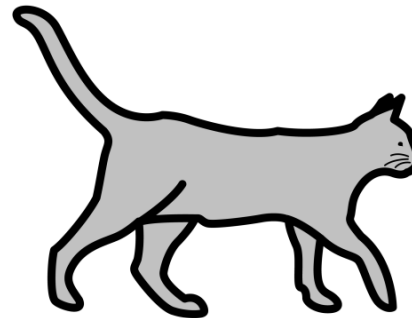
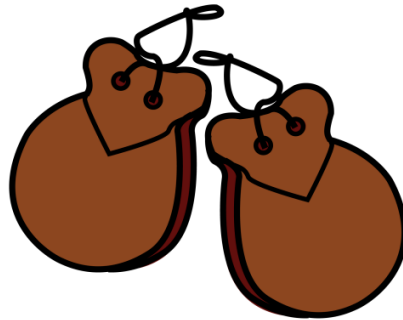
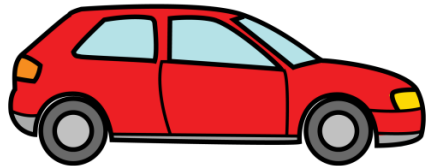
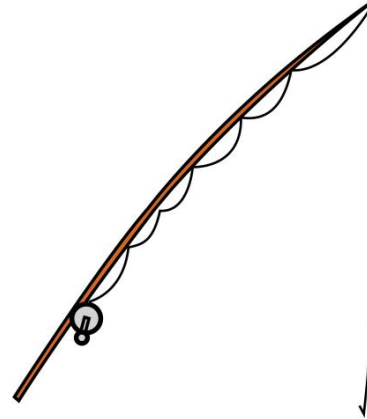
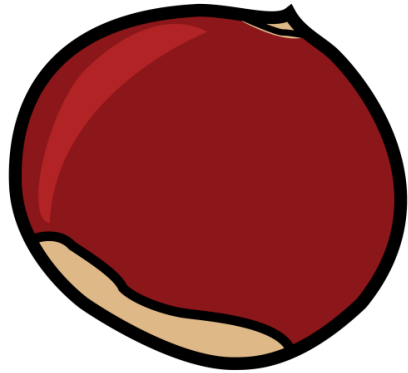
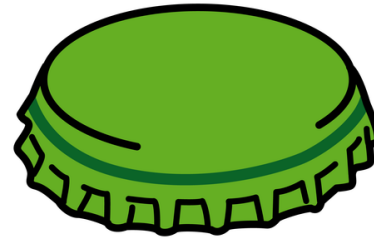
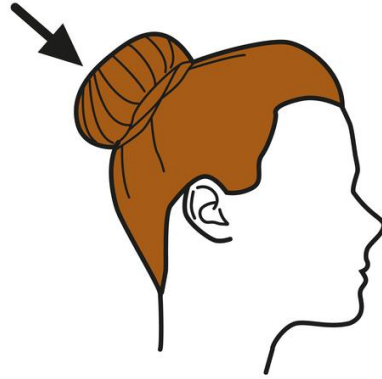
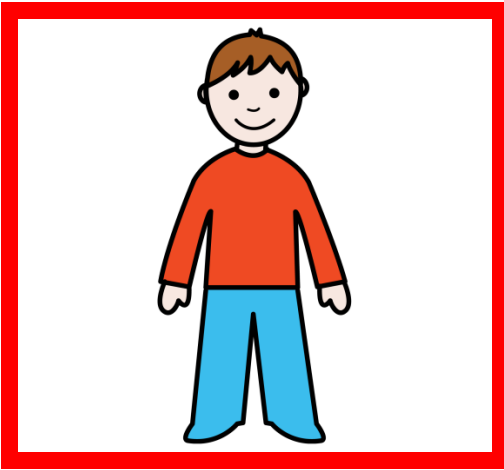
Fonema /r/



Fonema /s/



Fonema /ñ/



Fonema /rr/

