

# CUADERNO HALLOWEEN



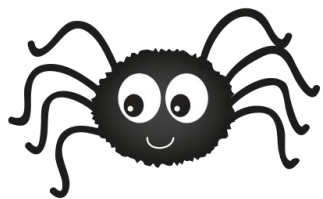


Material elaborado por: Tamara Rojo Martín  
[miradaespecial.com](http://miradaespecial.com)



Material bajo licencia Creative Commons. No se podrá copiar ni modificar y se compartirá citando página y autor.  
Queda prohibida su comercialización.

# Vocabulario



ARAÑA



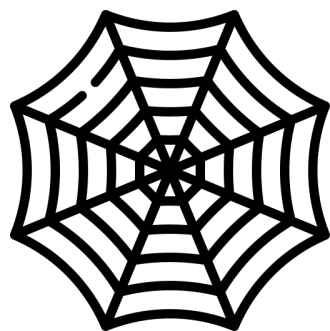
BRUJA



CALABAZA



MOMIA



TELA DE  
ARAÑA



ESCOBA



GATO NEGRO



LUNA

# Vocabulario



SOMBRERO



CASA  
ENCANTADA



MURCIÉLAGO



ESQUELETO



VELAS



CARAMELOS



FANTASMA



FRANKENSTEIN

# Vocabulario



CALDERO



HOMBRE  
LOBO



VAMPIRO



ZOMBIE

# Relaciona



FRANKENSTEIN

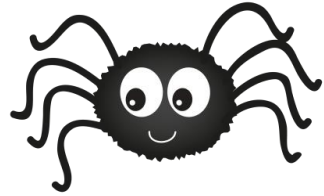
GATO NEGRO

ESCOBA

CALABAZA

VAMPIRO

# Ordena las letras



R-A-A-A-Ñ

J-R-A-U-B



A-M-M-O-I

D-A-C-E-O-R-L

A-S-F-A-N-A-M-T

# Sopa de Letras




C	M	O	M	I	A	C	G	E
A	A	V	H	B	R	U	J	A
L	F	C	A	L	D	E	R	O
A	K	A	X	C	L	F	P	Q
B	S	O	M	B	R	E	R	O
A	P	N	G	S	C	U	M	N
Z	A	R	A	Ñ	A	L	K	O
A	R	H	Z	L	R	J	Y	T







# Cuenta las sílabas




○ ○ ○ ○



○ ○ ○ ○



○ ○ ○ ○

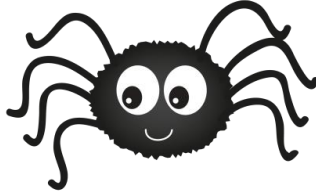


○ ○ ○ ○


# Cuenta las sílabas



○ ○ ○ ○



○ ○ ○ ○



○ ○ ○ ○




○ ○ ○ ○


# Cuenta las sílabas




○ ○ ○ ○



○ ○ ○ ○



○ ○ ○ ○



○ ○ ○ ○

# ¿Qué letras faltan?



V  M P  R



A  A  A



L   O

# ¿Qué letras faltan?



U  A



B  U  A



V   A

# Ordena las frases



GATO

EL

ES

NEGRO

---



NARANJA

LA

CALABAZA

ES

---

# Ordena las frases



**BRUJA**

**UNA**

**LA**

**ESCOBA**

**LLEVA**

---



**UN**

**EN**

**LOBO**

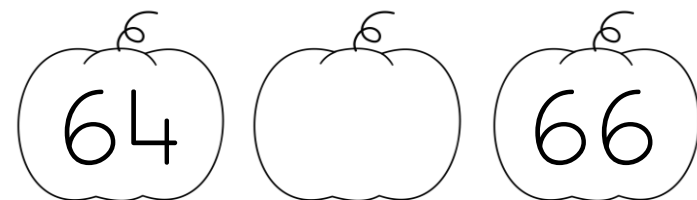
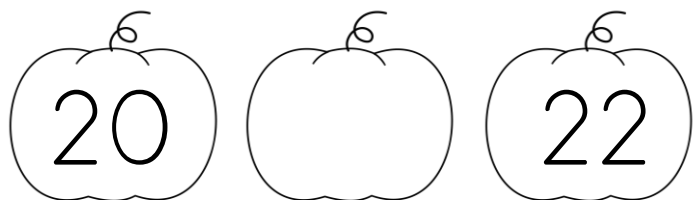
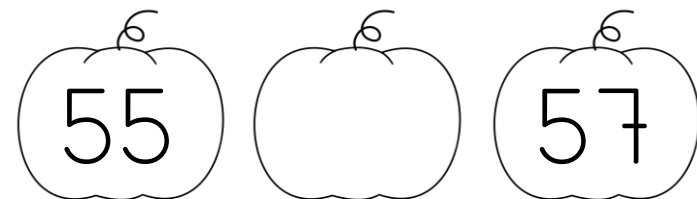
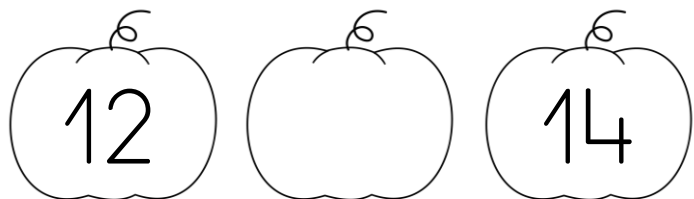
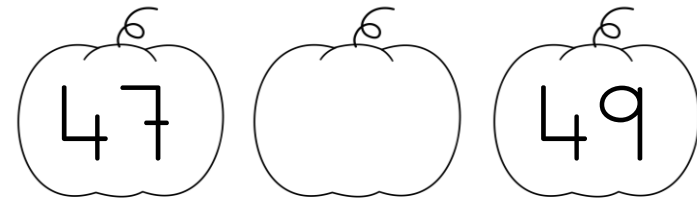
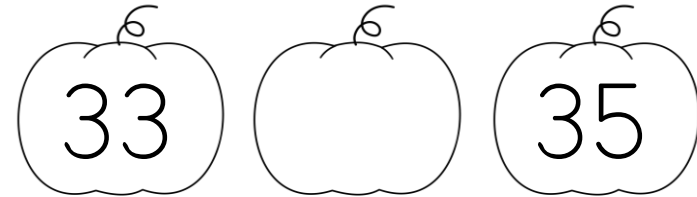
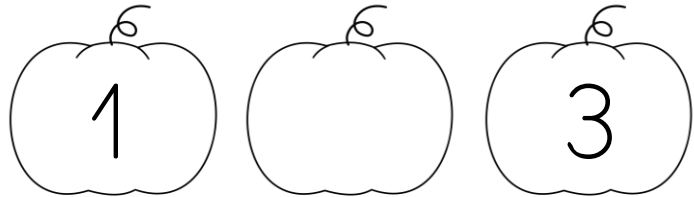
**LA**

**HAY**

**CASA**

---

# ¿Qué número falta?





TARJETAS  
HALLOWEEN



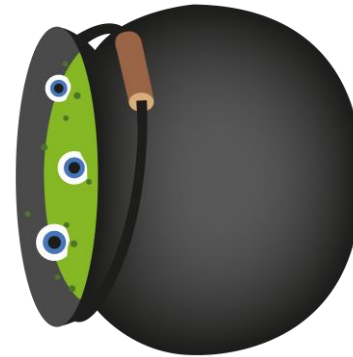
ESQUELETO



CARAMELOS



GATO  
NEGRO



CALDERO



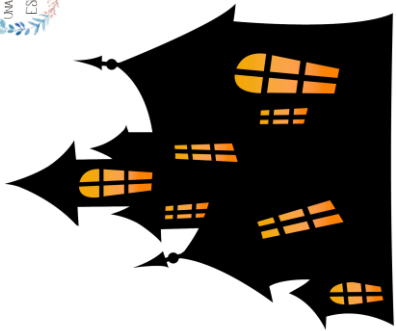
VAMPIRO



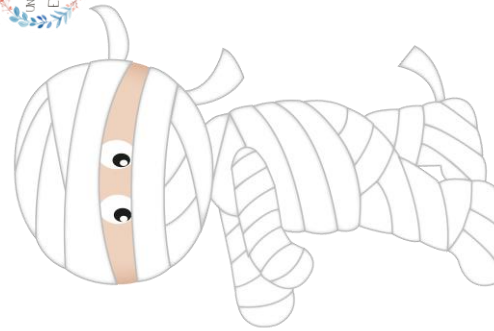
FANTASMA



FRANKENSTEIN



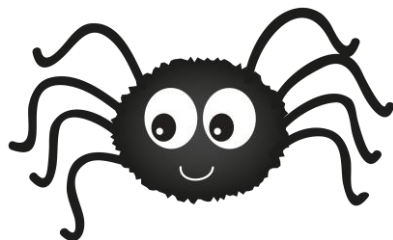
CASA  
ENCANTADA



MOMIA



CALABAZA



ARAÑA



HOMBRE LOBO



BRUJA



ZOMBIE



LUNA



TELA DE  
ARAÑA



VELAS



MURCIÉLAGO



SOMBRERO



ESCOBA